



Kx/3G ADSL2+ ROUTER

The KORTEX 3G/ADSL2+, a dual-WAN 3G / ADSL2+ firewall router integrated with the 802.11g wireless access point and 4-port switch, is a cutting-edge networking product for SOHO and office users. Uniquely, the router allows users to directly insert a 3G / HSPA SIM card into its built-in SIM slot instead of requiring external USB modems. This design will avoid the common problem of compatibility issues of many different 3G USB modems. With the increasing popularity of the 3G standard, communication via the Kx / 3G ADSL2+ Router is becoming more convenient and widely available - enabling users to use a 3G / UMTS HSDPA / HSUPA or GSM GPRS / EDGE Internet connection, making downstream rates of up to 7.2Mbps possible. Users can watch movies; download music on the road or access e-mail wherever a 3G connection is available. In addition, the integrated IPsec VPN function allows you to encrypt connections of up to 4 VPN tunnels to securely transmit data over the Internet, making the Kx / 3G ADSL2+ Router a perfect unit for SOHO and office users.

Features and Benefits:

- Dual-WAN approach - ADSL2+, 3G or Ethernet WAN for broadband connectivity
- 3G / HSPA embedded with a built-in SIM card slot
- Integrated 4-port Ethernet switch, one port can be configured as a WAN interface
- 4 IPsec VPN tunnels supported
- Secure VPN with powerful DES / 3DES / AES
- High-speed Internet access via ADSL2 / 2+; backward compatible with ADSL
- Supports 802.11g wireless access point with WPA-PSK / WPA2-PSK
- WPS (Wi-Fi Protected Setup) for easy setup
- Quality of Service Control for traffic prioritization and bandwidth management
- SOHO firewall security with DoS prevention and packet filtering
- Easy Sign-On (EZSO) and auto-scan ADSL settings
- Universal plug and play (UPnP) compliance
- Dynamic Domain Name System (DDNS)
- Available Syslog
- Supports IPTV application

Ideal for:

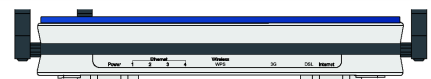
- SOHO users
- Office users
- Event or meeting organizers



*Kx /3G ADSL2+ Router
Ref: X096M3GW*

MAIN FEATURES

- Easy To Use
- 4 Ethernet LAN 10/100
- DHCP & NTP Server
- HTTP WEB Server
- FIREWALL
- VPN
- 3G or Ethernet WAN
- UPnP



▲ Front Panel



▲ Rear Panel



Kx/3G ADSL2+ ROUTER

Mobility

The Kx / 3G ADSL2+ Router allows you to insert a 3G / HSPA USIM card to its built-in SIM slot, enabling you to use a 3G / HSPA, UMTS, EDGE, GPRS, or GSM Internet connection, which makes downstream rates of up to 7.2Mbps possible. With the increasing popularity of the 3G standard, communication via the Kx / 3G ADSL2+ Router is becoming more convenient and widely available - allowing you to watch movies, download music on the road, or access e-mail no matter where you are. You can even share your Internet connection with others, whether you're in a meeting, or speeding across the country on a train. The integrated Wireless technology complied with 802.11g and backward compatible with 802.11b devices allow wireless access of up to 54Mbps. The Kx / 3G ADSL2+ Router is truly free and mobile.

Always-On Connection

The Kx / 3G ADSL2+ Router features dual-WAN interface allowing users to connect to the Internet via either wired connectivity of ADSL or broadband connectivity by configuring one of Ethernet ports as a WAN, or via 3G connections via inserting a 3G / HSPA SIM card into its built-in SIM slot. The auto fail-over feature ensures maximum connectivity and minimum interruption by quickly and smoothly connecting to a 3G network in the event that your ADSL line fails. The Kx / 3G ADSL2+ Router will then automatically reconnect to the ADSL connection when it's restored, minimizing connection costs. These features are perfect for office situations where constant connection is paramount.

Concern-free Access Security

The Kx / 3G ADSL2+ Router supports embedded IPSec VPN (Virtual Private Network) protocols, allowing users to establish encrypted private connections of up to 4 simultaneous tunnels over the Internet. With a built-in DES / 3DES VPN accelerator, the router enhances IPSec VPN performance significantly - so that you can access your corporate intranet and transmit sensitive data between branch offices and remote sites anytime; even when you are on the road, thus enhancing productivity.

The Wi-Fi Protected Access (WPA-PSK / WPA2-PSK) and Wired Equivalent Privacy (WEP) support ensures high-level data protection and WLAN access control. In addition, the rich firewall security features such as SPI, DoS attack prevention and URL content filtering are integrated to provide unparalleled protection for Internet access. The router also supports the Wi-Fi Protected Setup (WPS) standard, allowing users to establish a secure wireless network by simply pushing a button. If your network requires wider coverage, the built-in Wireless Distribution System (WDS) repeater function allows you to expand your wireless network without the need for any further wires or cables.

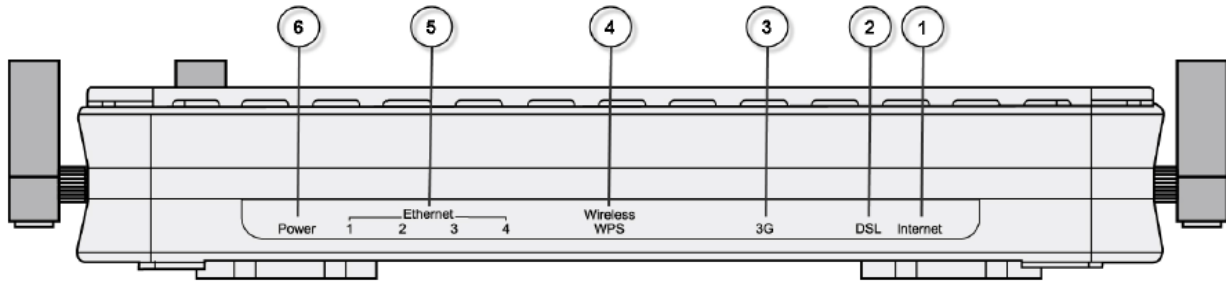
Applications

- High-speed Internet access
- Video-On-Demand
- Telecommuting
- Distance learning
- E-Commerce
- On-line gaming
- Video conferencing
- 3G Internet Backup...



Kx/3G ADSL2+ ROUTER

The Front Led



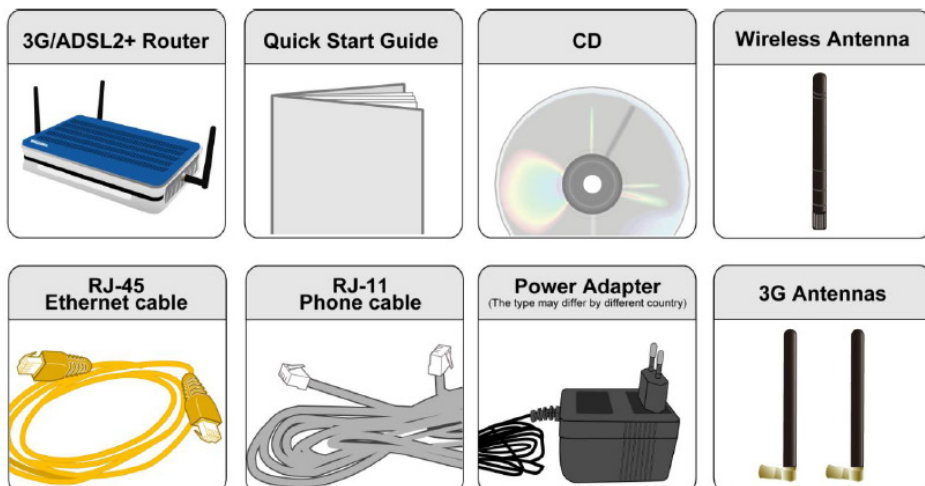
Web Interface:

Status

Device Information		Physical Port Status	
Model Name	KORTEX ADSL Router	Ethernet	✓
System Up-Time	1 Hour(s) 20 min(s)	ADSL	✗
Hardware Version	Annex A	3G	✗
Software Version	1.06d	EWAN	✗
		Wireless ▶	✓

WAN								
Port ▶	Protocol	VPI/VCI	Operation	Connection	IP Address	Netmask	Gateway	Primary DNS
ADSL	PPPoE	8/35		Link Down				

Package Content:



Commercial reference:

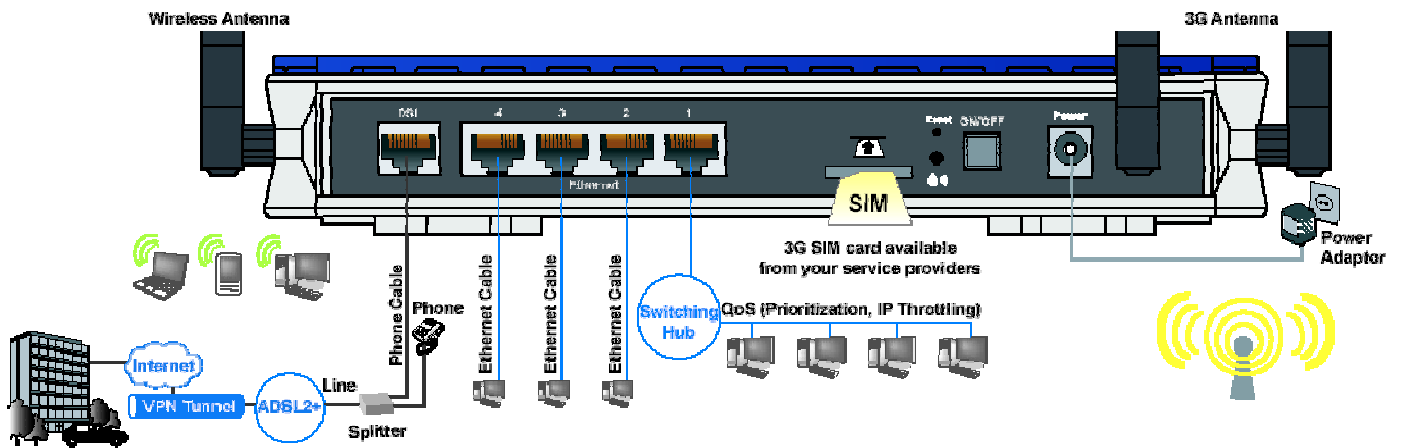
X096M3GW 4 LAN, 1 WAN, 1RJ-11 LINE, 9 LEDS



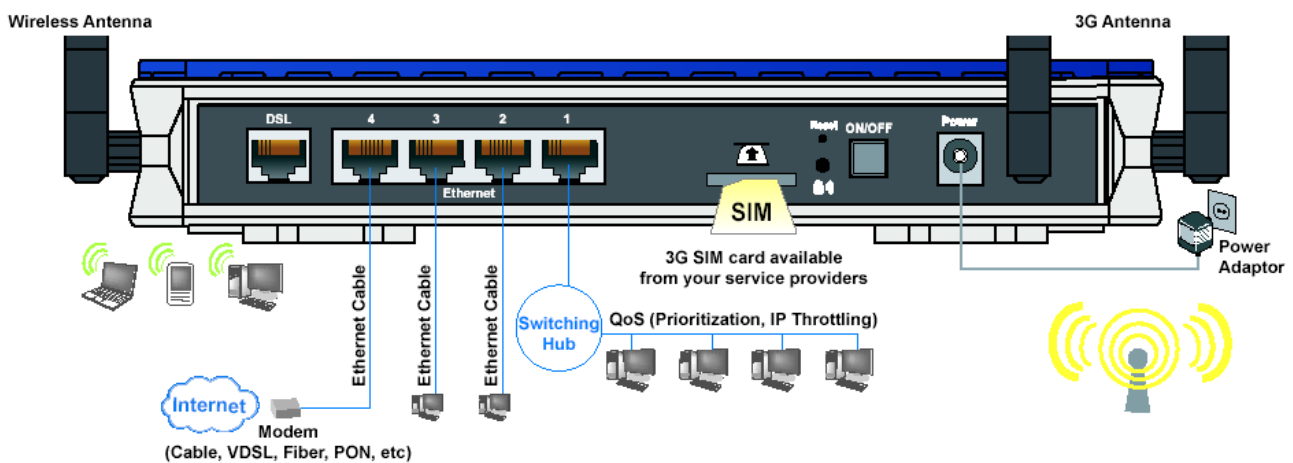
Kx/3G ADSL2+ ROUTER

Basic usages:

ADSL Router Mode



Broadband Router Mode





Kx/3G ADSL2+ ROUTER

Features & Specifications:

Features & Specifications	
ADSL COMPLIANCE	<p>Compliant with ADSL Standard</p> <ul style="list-style-type: none"> - Full-rate ANSI T1.413 Issue 2 - G.dmt (ITU G.992.1) - G.lite (ITU G.992.2) - G.hs (ITU G.994.1) <p>Compliant with ADSL2 Standard</p> <ul style="list-style-type: none"> - G.dmt.bis (ITU G.992.3) - ADSL2 Annex M (ITU G.992.3 Annex M) <p>Compliant with ADSL2+ Standard</p> <ul style="list-style-type: none"> - G.dmt.bis plus (ITU G.992.5) - ADSL2+ Annex M (ITU G.992.5 Annex M)
3G / HSPA	<p>Supports third generation (3G / 3.5G / 3.75G) digital cellular standards</p> <ul style="list-style-type: none"> Peak downlink speeds up to 7.2Mbps and peak uplink speeds up to 2.0Mbps Supports tri-band UMTS (HSPA): 900, 1900, and 2100MHz Receive equalizer with antenna diversity on the 900, 1900, and 2100MHz bands Supports quad band EDGE / GPRS / GSM: 850 / 900 / 1800 / 1900MHz Web-based GUI for 3G configuration and management
Network Protocols and Features	<ul style="list-style-type: none"> NAT, static routing and RIP-1 / 2 Universal Plug and Play (UPnP) Compliant Dynamic Domain Name System (DDNS) Virtual Server and DMZ SNTP, DNS relay and IGMP Proxy IGMP snooping for video service Management based-on IP protocol, port number and address SMTP client with SSL / TLS
Virtual Private Network (VPN)	<ul style="list-style-type: none"> 4 IPsec VPN Tunnels IKE key management DES, 3DES and AES encryption for IPsec Embedded powerful 3DES accelerator IPsec pass-through
Firewall	<ul style="list-style-type: none"> Built-in NAT Firewall Stateful Packet Inspection (SPI) Prevents DoS attacks including Land Attack, Ping of Death, etc. Remote access control for web base access Packet Filtering - port, source IP address, destination IP address, MAC address URL Content Filtering - string or domain name detection in URL string MAC Filtering Password protection for system management VPN pass-through
Quality of Service Control	<ul style="list-style-type: none"> Supports the DiffServ approach Traffic prioritization and bandwidth management based-on IP protocol, port number and address
IPTV Applications	<ul style="list-style-type: none"> IGMP Snooping Virtual LAN (VLAN) Quality of Service (QoS) IGMP Snooping & IGMP Proxy

Kx/3G ADSL2+ ROUTER

Features & Specifications	
ATM and PPP protocols	ATM Adaptation Layer Type 5 (AAL5)
	Multiple Protocol over AAL5 (RFC 2684, formerly RFC 1483)
	Bridged or routed Ethernet encapsulation
	VC and LLC based multiplexing
	PPP over Ethernet (PPPoE)
	PPP over ATM (RFC 2364)
	Classical IP over ATM (RFC 1577)
	MAC Encapsulated Routing (RFC 1483 MER)
Wireless LAN	OAM F4 / F5
	Compliant with IEEE 802.11g and 802.11b Standards
	2.4GHz - 2.484GHz frequency range
	Up to 54Mbps wireless operation rate
	Wi-Fi Protected Setup (WPS) for easy setup
	64 / 128 bits WEP encryption supported
	Wireless Security with WPA-PSK / WPA2-PSK Support
	WDS repeater function support
Management	802.1x radius supported
	WLAN on / off time schedule control
	Easy Sign-On (EZSO) and Auto-scan ADSL settings
	Web-based GUI for remote and local management
	Upload and download of firmware upgrades and configuration data via web-based GUI
	Embedded Telnet server for remote and local management
	Available Syslog
	Mail Alert for WAN IP Changed, Failover indication
	Wake On LAN
Supports DHCP server / client / relay	
TR-069 supports remote management	
SNMP v1 / v2 / v3 supports remote and local management	

Kx/3G ADSL2+ ROUTER

Features & Specifications	
Hardware Specifications	Physical Interface
	SIM slot : (for the SIM card from Telco / ISP)
	WLAN: 1 detachable antenna
	3G antenna x 2pcs
	DSL: ADSL port
	EWAN: Ethernet port #4 can be configured as a WAN interface for connecting to ADSL / Cable / FTTH / VDSL device
	Ethernet: 4-port 10 / 100Mbps auto-crossover (MDI / MDI-X) Switch
	Factory default reset button
	WPS push button
	Power jack
Power switch	
Operating Environment	Physical Specifications
	Dimensions: 9.04" x 6.10" x 1.69" (229.5mm x 155mm x 43mm)
	Power Requirements
Certification	Input: 12V DC, 1.2A
	Operating temperature: 0 – 40°C
	Storage temperature: -20 – 70°C
	Humidity: 20 – 95% non-condensing
	FCC part 15, CE, LVD